



Westlake
CHARTER SCHOOL

2022-2023

**A guidebook for families,
students and our community**

We demonstrate what is possible when school and community collaborate to create inspiring adults with the academic and social-emotional readiness to lead as global citizens.



Westlake
CHARTER SCHOOL

WELCOME TO THE 22/23 SCHOOL YEAR!

August 2, 2022

Families, we are excited to welcome our Explorers for the 2022-2023 school year! As we launch this school year, we will continue to follow guidance in accordance with the California Department of Public Health (CDPH) and Sacramento County Public Health (SCPH) guidelines. These guidelines allow for more flexibility as we head into the 22-23 school year, including opportunities to gather and build our community in traditional ways!

Families, we appreciate all that you do to help keep our school community healthy and safe by following the protocols outlined in this guidebook. As the CDPH and SCPH update their recommendations, we will update this Guidebook.

Thank you, Explorer Families, for your continued support.



Westlake
CHARTER SCHOOL

SCHOOLWIDE GUIDELINES

SCHOOLWIDE PROTOCOLS



Westlake
CHARTER SCHOOL

HEALTH PRE - SCREENING

All families and staff members are asked to prescreen at home. If your child has a temperature of 100.4 or higher and/or any of the symptoms listed below, please stay home. Staff and students may return to school when:

- At least 24 hours have passed since symptom resolution; and
- Other symptoms have improved; and
- They have a negative test for SARS-CoV-2, OR a healthcare provider has provided documentation that the symptoms are typical of their underlying chronic condition (e.g., allergies or asthma) OR a healthcare provider has confirmed an alternative named diagnosis (e.g., Streptococcal pharyngitis, Coxsackie virus), OR at least 10 days have passed since symptom onset.

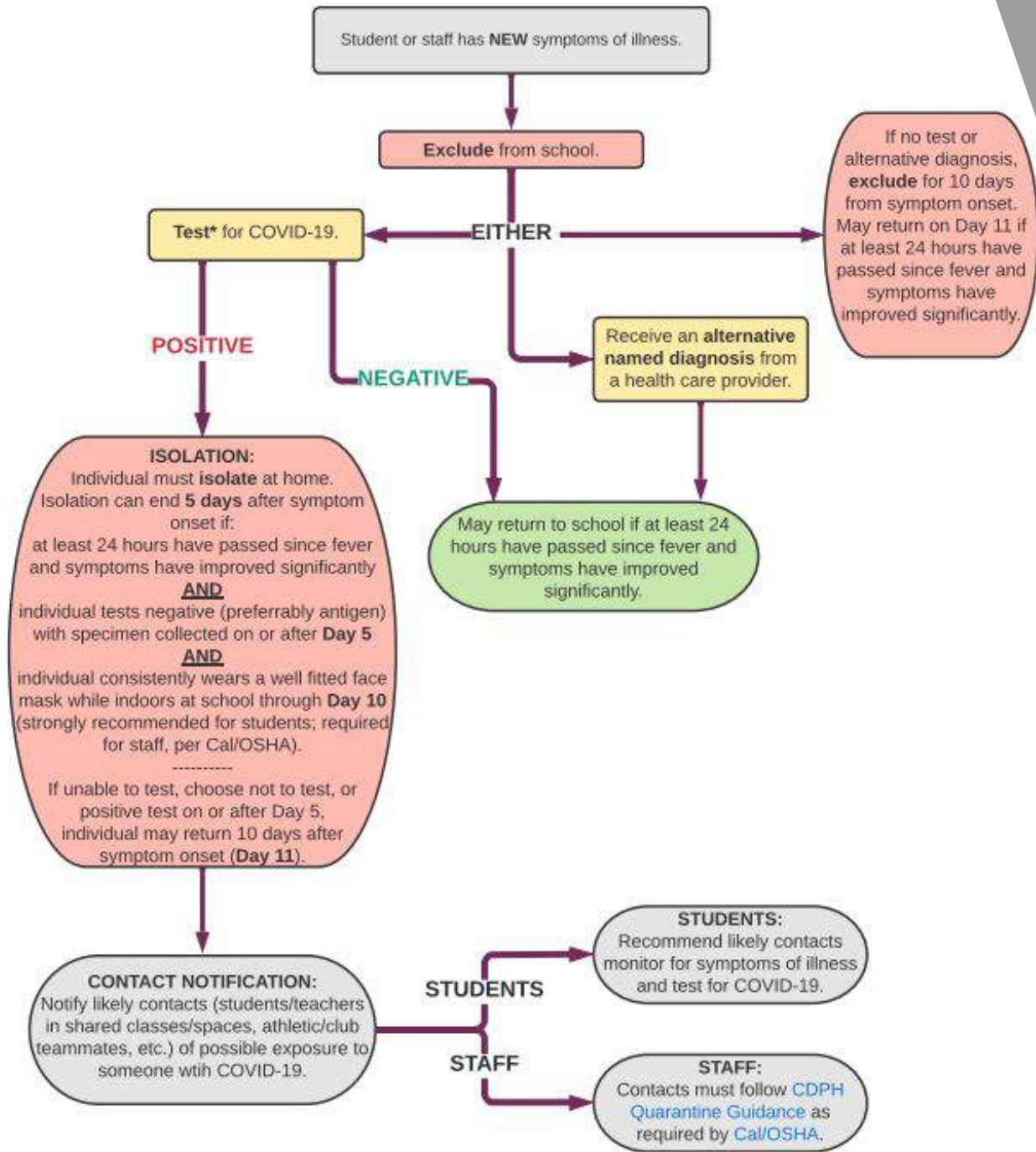


SCHOOLWIDE PROTOCOLS



Westlake
CHARTER SCHOOL

COVID-19 Decision Tree for Child Care, Pre-School, & K-12 Schools



* PCR or rapid antigen test are acceptable. Asymptomatic individuals who have tested positive for COVID-19 are not required to re-test for 90 days following their initial infection. However, if individuals develop new symptoms following a COVID-19 exposure, they should isolate and test.
July 25, 2022



SCHOOLWIDE PROTOCOLS



Westlake
CHARTER SCHOOL

COVID-19 GUIDANCE

CHILD CARE, PRE-SCHOOL, AND K-12 SCHOOLS

CHILD/STUDENT WITH NEW SYMPTOMS OF ILLNESS

Children/students with symptoms of illness should stay home and test for COVID-19.

- If test is negative, may return if at least 24 hours have passed since fever and symptoms have improved significantly.
- If test is positive, stay at home for 5 days. Isolation can end after Day 5 if symptoms are not present or are resolving and a diagnostic specimen collected on Day 5 or later tests negative. Consistent use of a well fitted face mask while indoors at child care/school is **strongly recommended** through Day 10. If unable to test or choosing not to test, and symptoms are not present or are resolving, isolation can end after Day 10.

CHILD/STUDENT EXPOSED TO PERSON WITH COVID-19 IN ANY SETTING

If potential exposure occurs at a school setting, parents/caregivers should be notified of the potential exposure.

Children/students with exposure to someone with COVID-19 may continue to take part in all aspects of child care or schooling, including sports and extracurricular activities, unless they develop symptoms or test positive for COVID-19. This includes children/students who have continuous household exposure (live with someone who has COVID-19). It is strongly recommended that exposed children/students wear a well-fitting mask indoors around others for at least 10 days following the date of last exposure, if not already doing so unless they are under age 2. It is recommended that the individual test for COVID-19 5 days after the exposure.

CHILDREN/STUDENTS WHO HAVE TESTED POSITIVE FOR COVID-19 IN THE PAST 90 DAYS

Asymptomatic children/students that have tested positive for COVID-19 within the past 90 days are not required to quarantine or test for COVID-19 in response to a new COVID-19 exposure. However, if a child develops new symptoms after being exposed to COVID-19, they should quarantine and test.

REPORTING OUTBREAKS TO SCPH

Elementary Schools, Pre-Schools, & Child Care (Single Classroom Cohort)

For schools/grades where students are primarily with the same classroom cohort (e.g. elementary school, pre-school, child care), schools should report outbreaks to SCPH using the [online outbreak reporting module](#) when:

- At least **3** students in a **classroom cohort** are suspected, probable, or confirmed to have COVID-19 within a 14-day period.
- OR**
- At least **10%** of the **school population** are suspected, probable, or confirmed to have COVID-19 within a 14-day period.

07/25/2022



SCHOOLWIDE PROTOCOLS



Westlake
CHARTER SCHOOL

Middle/High Schools (Multiple Classroom Cohorts)

For schools/grades where students are part of numerous classroom cohorts (e.g. middle and high school), schools should report outbreaks to SCPH using the [online outbreak reporting module](#) when:

- At least **10%** of a **grade level** is suspected, probable, or confirmed to have COVID-19 within a 14-day period.
OR
- At least **10%** of the **school population** is suspected, probable, or confirmed to have COVID-19 within a 14-day period.

07/25/2022





SYMPTOMATIC / RAPID TESTING

If students become ill at school and begin demonstrating flu-like symptoms, a rapid response test may be requested by families. Return to school details, including Quarantine and Isolation protocols, are contained within this guidebook. Protocols may be updated as new information is provided by health agencies.

ASYMPTOMATIC / SURVEILLANCE TESTING

Families and students are encouraged to seek testing at regular intervals. Testing sites are located throughout Sacramento County, a list of sites can be found [here](#).



VACCINATION AVAILABILITY

We are asked by our partners at SCPH to strongly encourage all eligible students, staff, and essential visitors to get the COVID vaccination as our best protection against the spread of the virus. We will continue to partner with NUSD and SCPH to provide vaccination resources. [Click HERE](#) to obtain a vaccination through the CDPH MyTurn website and [Click HERE](#) to find the clinics offered by Natomas USD, or through your primary care physician.

SCHOOLWIDE PROTOCOLS



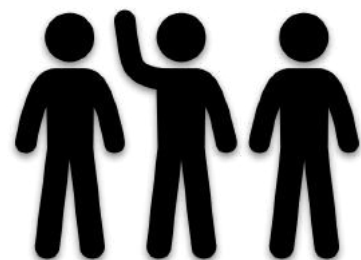
Westlake
CHARTER SCHOOL

ESSENTIAL VISITORS & VOLUNTEERS

During the past two years the CDPH has recommended that schools limit on-campus access to Students, Staff, and Essential Visitors. We will open the year with preparing for in-class volunteerism, however WCS will continue to follow the lead of our partners at CDPH and SCPH and adjust accordingly should the need arise.

FORMAL PARENT MEETINGS

It is critical that families and staff work together to support our students. To do this parent meetings are scheduled throughout the year. When scheduling meetings we will work to allow for either in-person or virtual meetings. Families and staff are encourage to collaborate and remain flexible in response to the current situation.



SCHOOLWIDE PROTOCOLS



Westlake
CHARTER SCHOOL

FACE COVERINGS

The California Department of Public Health and Sacramento County Public Health continue to strongly recommend masking indoors. Masks will be made available to those who need one.



For those who choose to follow the CDPH recommendation, the illustration above demonstrates the correct way to wear a face covering.



HAND SANITATION

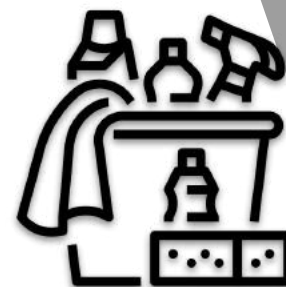
- Students and staff should wash or sanitize their hands:
 - When entering and exiting the classroom
 - Before and after eating
 - After coughing or sneezing
 - After using the restroom
 - Periodically throughout the day





CLEANING & DISINFECTING

- Door knobs and handles, light switches, desk tops, table tops, countertops and sinks, soap dispensers, and paper towel dispensers will be cleaned nightly.
- Classrooms will be stocked with surface wipes that staff can use to clean and disinfect as needed throughout the day.



VENTILATION

- Westlake Charter School's Mabry and East Commerce Campus HVAC systems have top-grade filters, which are a MERV-13 rating.
- MERVs are based on a filter's performance of filtering out particles between 0.3 and 10 microns.



Westlake

CHARTER SCHOOL